

JFMM 4

Hand-filing machine

Order no. 0 005 300



Instruction Manual

1



List of contents

1	List of contents.....	Page 02
2	Tips on using the manual	Page 03
3	Safety instructions	Page 04
4	Warranty / identification	Page 06
5	Operation / Use / Care	Page 07
6	Telefax form.....	Page 12

2

Tips on using the manual

This manual has been written for the device user to ensure a problem-free operation, care and maintenance.

Important instructions and information concerning safety and operational reliability have been highlighted.

The symbols used in the manual have the following meanings:

CAUTION!

Working and operating processes which must be observed to the letter to exclude any risk to persons.

IMPORTANT!

Working and operating processes which must be observed to the letter to avoid any damage to the device.

INFORMATION!

Technical information to which the device operator must give special attention.

The illustrations and diagrams are numbered in sequence within each chapter. Some of these illustrations have keys. References to illustrations within the text e. g. (5.1/2) have the following meaning:

5.1 = Figure 5.1

2 = Position 2 in the key to the figure.

Our service department is available at all times in case of technical problems not addressed in this manual:

Telephone +49 (0) 22 04 / 8 39 - 0

Telefax +49 (0) 22 04 / 8 39 - 60

INFORMATION!

Internet www.joke.de

3

Safety instructions



IMPORTANT!

(1) This device has been built according to the latest technical standards and generally accepted safety regulations. Nevertheless, it can constitute danger to life and limb for operator or third parties and a hazard to the device itself or other equipment during use.

(2) Only use the device if in perfect working order and for its intended purpose. You must always pay attention to the instruction manual and safety instructions therein and be aware of the risks! Repair any faults which could affect the device's safety immediately by yourself or have these repaired.

The device is designed exclusively for grinding, milling and polishing with the foils listed and approved in the joke catalogue for surface finishing. Any other use will be deemed to be contrary to its intended purpose. The manufacturer cannot be held liable for any resulting damages. The risk is borne solely by the user.

Correct use also includes compliance with the instruction manual and an observation of the care and maintenance conditions.

(3) Keep the instruction manual handy at the device's place of use.

(4) Pay attention to and observe generally applicable statutory and otherwise binding regulations relating to accident prevention and environmental protection in addition to the information provided in the instruction manual!

CAUTION!

(5) All personnel commissioned to work on or with the device must have read this instruction manual, and particularly the safety instructions chapter, before starting work. This applies especially for personnel who only work with the device occasionally.

(6) Stop the device immediately should you notice changes to the device or its operating behaviour that are relevant to its safety. Have these remedied before restarting work.

IMPORTANT!

(7) Do not carry out any modifications, additions or conversions to the device! This also applies to the installation and adjustment of safety equipment.

(8) Spare parts must meet the technical requirements specified by the manufacturer. This can only be guaranteed with original joke® spare parts.

(9) Any work on/with the device may only be carried out by qualified, appropriately trained and authorised personnel. Pay attention to minimum statutory age limits!

CAUTION!

(10) Wear safety goggles when working with the handpiece

3

Safety instructions



- (11) Personnel undergoing training or in a general apprenticeship should only be allowed to work with the machine under the constant supervision of an experienced operator!
- (12) Restrain from any type of work that could jeopardise your safety.
- (13) The device may only be used if all protective and safety equipment is in place and in proper working order.
- (14) Do not leave the device unattended when switched on!
- (15) Stop and secure the device immediately in the event of malfunctions! Faults must be remedied at once.

4

Warranty / Identification



joke Technology GmbH warrants the correct manufacture of every joke device which is delivered in accordance with the terms of contract and delivery.

This warranty does not cover damages caused by normal wear and tear, incorrect handling, negligent use, the fitting of non-original spare parts, inadequate care and/or a failure to comply with this technical manual.

IMPORTANT!

The device may only be used by appropriately trained personnel. If it is not, all warranty claims will be forfeited according to the terms of delivery.

Device identification

The manufacturer's code and type code, CE label and series number can be found on the rear of control units or in the case of handpieces on the handle sleeve.

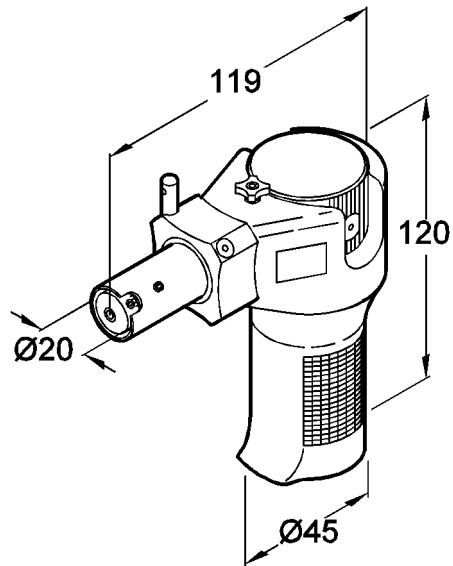
5

Operation / use



Purpose of use

Technical information for joke hand-filing machine JFMM 4 for connection to micromotors JBM 40, JBM 50 and JBM 50HT

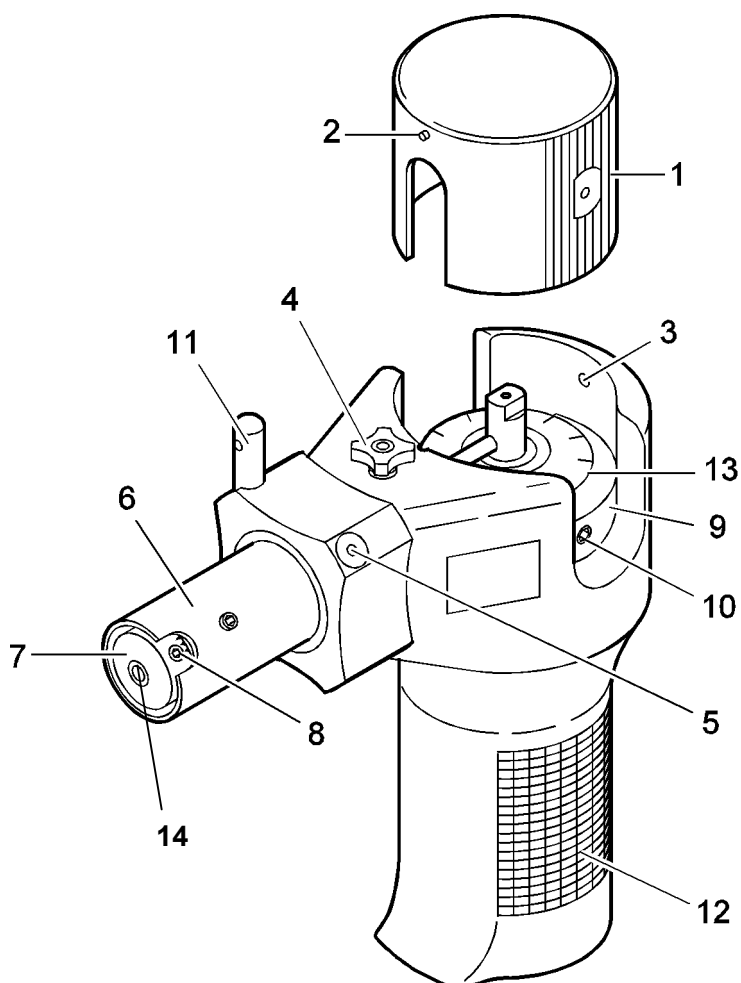


joke Hand-filing machine JFMM 4	Order no. 0 005 300
Stroke length	0 – 6 mm infinitely adjustable
Number of strokes	0 - 8000 strokes/min
Tool receptacle	up to Ø 6.3 mm
Weight	750 g
Accessories	2 tool holders, 2 mounting wrenches Oil

5

Operation / use

Functional and operating elements of joke hand-filing machine JFMM 4



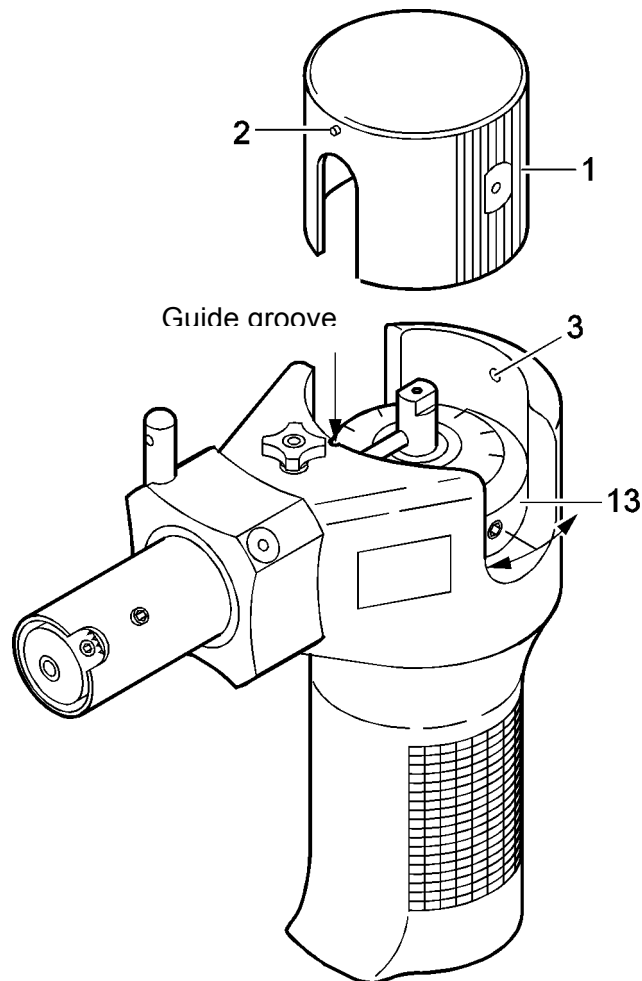
- | | |
|-------------------------------|-------------------------------|
| 1 – Protective hood | 8 – Screw |
| 2 – Guide pin | 9 – Stroke adjustment ring |
| 3 – Screw for protective hood | 10 – Screw for stroke setting |
| 4 – Screw for guide bush | 11 – Guide pins |
| 5 – Lubrication point | 12 – Rubber handle |
| 6 – Guide bush | 13 – Shaft |
| 7 - Tool receptacle | 14 – Receptacle adapter |

5

Operation / use

Setting the joke hand-filing machine JFMM 4 into operation

The protective hood (1) is to be removed when coupling the hand-filing machine. This is necessary in order to be able to rotate the shaft by hand, should there be any difficulties during engagement in the motor coupling.



- (1) Loosen screw (2).
- (2) Remove protective hood (1)
- (3) Rotate the shaft (13) to-and-fro by hand until the carrier of the filing machine engages in the coupling of the micromotor.
- (4) Push fit the protective hood (1). In doing so, pay attention to the position of the guide pin (1) and groove.

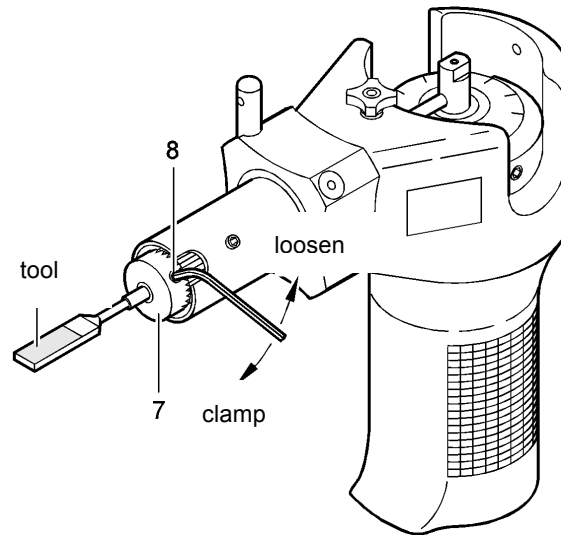
IMPORTANT!

Never operate the filing machine without the protective hood!

5

Operation / use

Tool change



- (1) Loosen the screw (8) and tighten it firmly again after inserting the tool into the tool receptacle (7).

CAUTION!

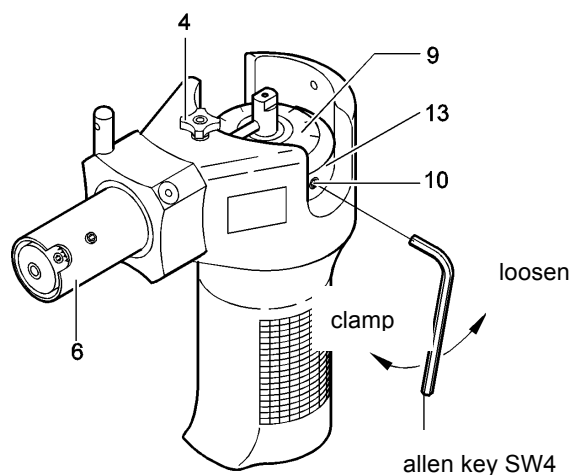
Remove receptacle adapter in the case of tools smaller than \varnothing 3.2 mm.

Only use approved tool listed in the joke catalogue!

- (2) In order to adjust the working stroke, remove the protective hood (1) and after loosening the screw (10), set the desired working stroke by turning the adjusting ring (9).
- (3) Tighten the screw (10) again and install the protective hood as already described.

Recommended stroke length: 0.5 - 3 mm for filing

3 - 6 mm for polishing



5

Operation / use

(4) Loosen the screw (4) for clamping the guide bush (4).
Rotate the guide bush (6) into the desired position.

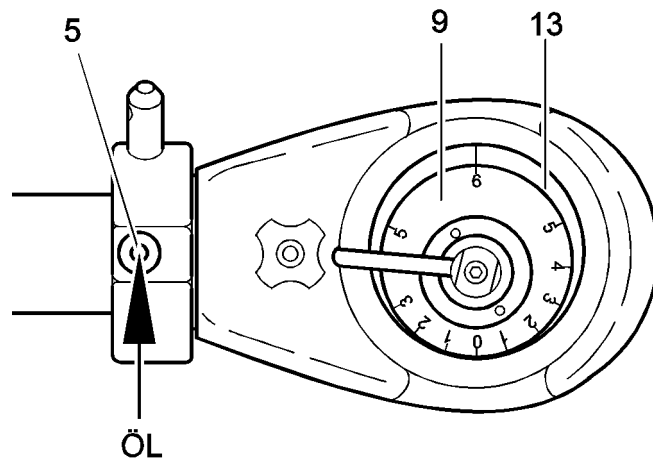
If work is to be performed with the guide bush locked, tighten the screw (4) again.

If work is to be performed with a freely guidable bush, leave the setscrew (4) loose.

The tool can be subsequently guided with 2 fingers by the guide pins (11).

Maintenance:

The guide bush should be oiled once a day at the lubrication point (5) provided.



6



Telefax form

To
JOKE-Service Department

+49 (0) 22 04 / 8 39 - 60

Sender:

Company _____

Name _____

Street _____

Postcode town/city _____

Please send us the spare parts drawing and

the spare parts drawing for the following equipment:

as a printout (see address above),

by fax, _____

as a pdf file to my e-mail address _____

ENESKA 4-I control unit	Order no. 0 008 801	<input type="checkbox"/>
Rapid-chuck handpiece type JG 30	Order no. 0 009 810	<input type="checkbox"/>
Handpiece JEHR 500	Order no. 0 008 810	<input type="checkbox"/>
Angle handpiece type JERA 270	Order no. 0 009 812	<input type="checkbox"/>
Angle handpiece type JEKC 300	Order no. 0 009 813	<input type="checkbox"/>
Mini hand-filing machine JN 44	Order no. 0 001 402	<input type="checkbox"/>
Mini hand-filing machine JN 48	Order no. 0 001 403	<input type="checkbox"/>
DIPROFIL® mini hand-filing machine FMR/E 5	Order no. 0 001 207	<input type="checkbox"/>
DIPROFIL® mini hand-filing machine FMR/E 10	Order no. 0 001 215	<input type="checkbox"/>
DIPROFIL® mini hand-filing machine FMR/E 15	Order no. 0 001 209	<input type="checkbox"/>
Hand-filing machine JFMM 4	Order no. 0 005 300	<input type="checkbox"/>

Date

Signature

joke Technology GmbH

Asselborner Weg 14 - 16

D-51429 Bergisch Gladbach

Telephone: +49 (0) 22 04 / 8 39 – 0

Telefax: +49 (0) 22 04 / 8 39 - 60

Internet: www.joke.de

E-Mail: info@joke.de



All rights reserved for
modifications in the interest
of technical progress

joke 10/10